

PowerConnections

3 Pin Swiss Converter Plug Technical Data & Fitting Instructions

Description

The 3 Pin Swiss Converter Plug (SCH3) is an adapter that converts European IEC 83:1975 Standard C 2b, C4, C5, and C6 plug to the SEV 1011 (Swiss) system format. The plug is designed and manufactured to meet the requirements of SEV 1011 and IEC 60884-1. It complies fully with the LVD and Plug and Socket safety regulations. The design of the clamping method ensures the European IEC 83:1975 Standard C 2b, C4, C5, and C6 plug is permanently retained.

Classification

- Adapter, Single portable,
- Normal use,
- Converts European IEC 83:1975 Standard C 2b, C4, C5, and C6 plug to the SEV 1011 format.
- Suitable for Class 1 devices (earthed) only.
- Not Suitable for any other plug system.

Certification

- SEV ASE ElectroSuisse

Relevant Standards

- SEV 1011 — Electrical Plugs and Sockets
- IEC 60884-1 – General requirements of Plugs and Socket-outlets for Household and similar purposes

Rating

- | | |
|----------------------------|-----------------------------------|
| - Voltage | 250V ac |
| - Current | 10 amps max, |
| - Load | 2500 watts max. |
| - Frequency | 60 Hz |
| - Environmental Protection | IP 3X (STD accessory rating). |
| - Flammability | V2 (external Casing) |
| - Mechanical Strength | 1000 grams @ 500mm |
| - Colour | Black or White |
| - Weight | 35 grams typical |
| - Finish | Plain and fine sparkle |
| - Retention | Permanent by internal star washer |

Note: - Tolerance as per relevant Swiss and British Standards

Safety Design Features

- Supplied in a tight fitting tube, which comes off when the Schuko plug is installed.
- No loose parts
- Plug features designed to meet the requirements of SEV 1011.
- Meets the requirements of IEC 60884-1.

Dimensions:

Width	37mm
Height	37mm
Overall length of SCH	57mm
Diameter of tube	41mm
Length of tube	48mm
Overall length of Tube and SCH	58mm

Fitting

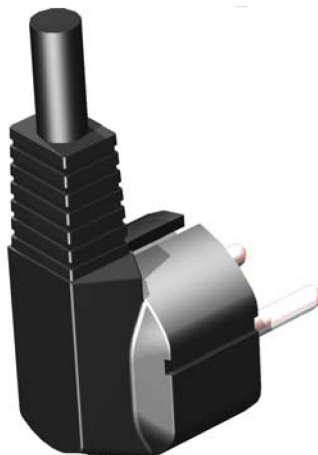
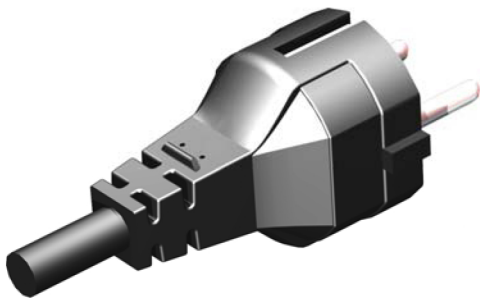
The 3 Pin Swiss Converter Plug (SCH3) should be fitted as follows:

1. Do not remove the SCH3 from the tube at this stage
2. Insert the Schuko Plug into the SCH3.
3. Push the Schuko Plug fully home
4. Pull the assembly out of the tube
5. Ensure there is no gap between the SCH3 and the Schuko plug
6. Assembly complete

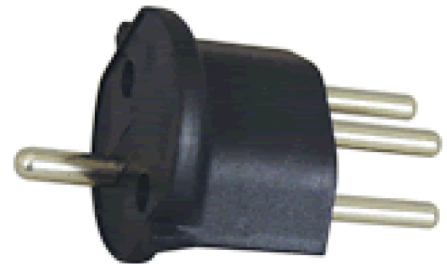
Service Conditions

- Temperature Range
 - Storage -40 °C to +80 °C Ambient
 - Working -15 °C to +50 °C 95% RH Ambient
- Altitude 2000m above sea level max.
- Not subject to exposure to direct radiation from the sun
- Abnormal Condition - Avoid pollution by smoke, chemical and flammable fumes salt laden spray, periods of high humidity > 95% relative humidity (RH)

European Grounded Schuko Plug
Straight and Right Angled



SCH3 Swiss Converter Plug



Installation tube



PowerConnections

Fitting Instructions for the SCH3 European to Swiss Converter

English

The 3 Pin Swiss Converter Plug (SCH3) should be fitted as follows:

1. Do not remove the SCH3 from the tube at this stage
2. Insert the Schuko Plug into the SCH3.
3. Push the Schuko Plug fully home
4. Pull the assembly out of the tube
5. Ensure there is no gap between the SCH3 and the Schuko plug
6. Assembly complete

French

La prise convertisseur suisse à trois broches (SCH3) doit être montée comme suit :

7. Pour le moment, ne pas enlever la SCH3 du tube
8. Insérer la prise Schuko dans la SCH3.
9. Pousser la prise Schuko à fond
10. Extraire l'unité du tube
11. Veiller à ce qu'il n'y ait pas d'écart entre la SCH3 et la prise Schuko
12. Montage terminé

German

Der 3-Stift-Steckeradapter Swiss Converter Plug (SCH3) ist wie folgt am Gerätestecker anzubringen:

1. Den SCH3 zunächst nicht aus dem Installationsrohr entfernen.
2. Den Schukostecker in den SCH3 einstecken.
3. Den Schukostecker bis zum Anschlag hineindrücken.
4. Stecker und Adapter zusammen aus dem Installationsrohr ziehen.
5. Sicherstellen, dass zwischen dem SCH3 und dem Schukostecker kein Zwischenraum ist.
6. Die Adapterinstallation ist abgeschlossen.

Italian

La Spina adattatore svizzera a 3 poli (SCH3) deve essere inserita come segue:

13. In questa fase, non rimuovere la spina SCH3 dal tubo
14. Inserire la spina Schuko nella presa SCH3.
15. Spingere la spina Schuko fino in fondo
16. Estrarre il gruppo dal tubo
17. Assicurarsi di non lasciare spazio tra la spina SCH3 e la spina Schuko
18. Montaggio completo

European Grounded Schuko Plug
Straight and Right Angled



SCH3 Swiss Converter Plug



Installation Tube

