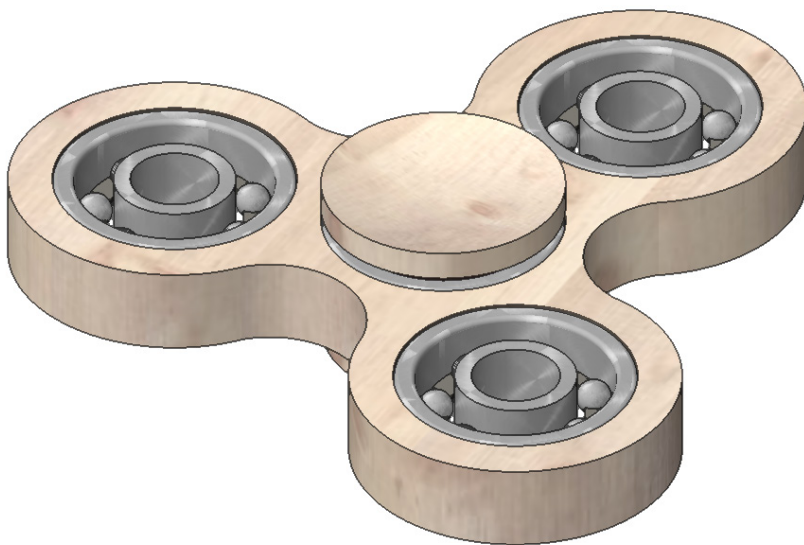
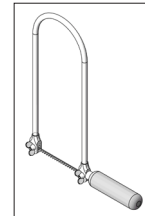


118.484

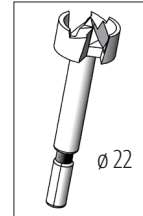
OPITEC Spinner Wood with 3 Ball Bearings as Weight



Tools Required:



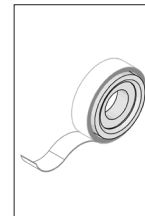
Fretsaw or
Decoupling
Saw



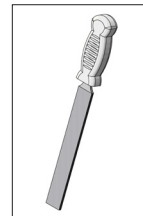
Forstner Drill



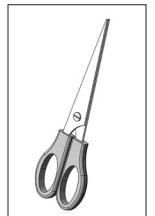
Pricking Awl



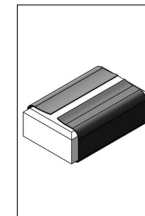
Adhesive Tape



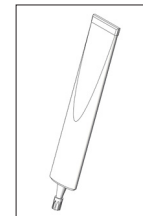
Engineer's File



Scissors



Sandpaper



All Purpose
Glue

Please Note!

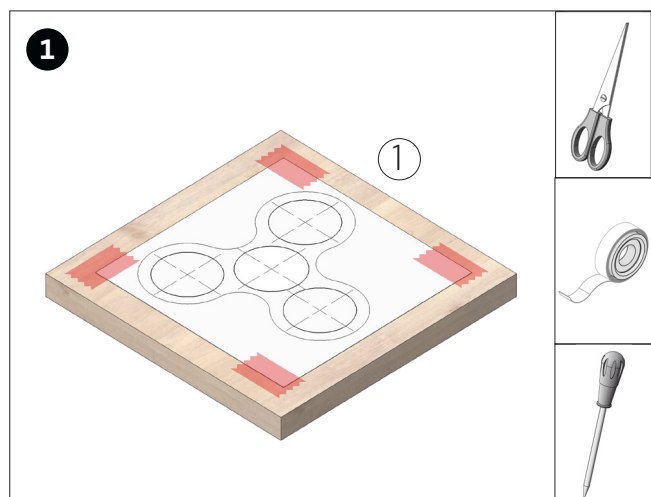
Finished projects of OPITEC handicraft kits are not play toy articles in the same sense as general commercially available ones, but rather are intended as teaching and learning material supporting educational objectives. The content of this construction kit may only be built and used by children and adolescents under the guidance and supervision of qualified adults. Not suitable for children under 36 months. Risk of suffocation!

Part List	Quantity	Size (mm)	Designation	Part No.
Birch Plywood	1	100 x 100 x 8	Plywood	1
Ball Bearings for Spinner	1	ø 22	Ball Bearing	2
Standard Ball Bearing	3	ø 22	Weights	3
Wooden Cover Cap	2	ø 22	Ball Bearing Cover	4

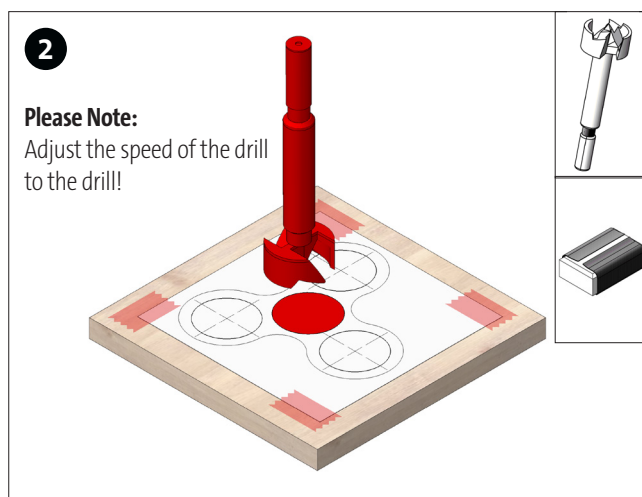
General:

The ball bearing can possibly move not smoothly because of preservatives. In this case wash out the bearing with grease-dissolving agent. If compressed air is available, the bearing can also be blown out, taking into account the safety regulations.

Instruction 118314
OPITEC Spinner Wood with 3 Ball Bearings as Weights



Cut out the desired template (page 3) and glue it with adhesive tape on the plywood plate (1). Mark the holes with the prong.

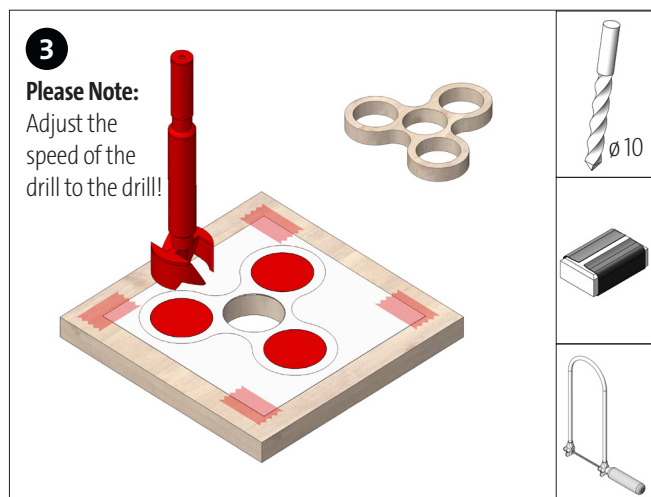


2

Please Note:
Adjust the speed of the drill to the drill!

Drill and clean the center hole for the ball bearing (2) with the Forstner drill ($\varnothing 22$).

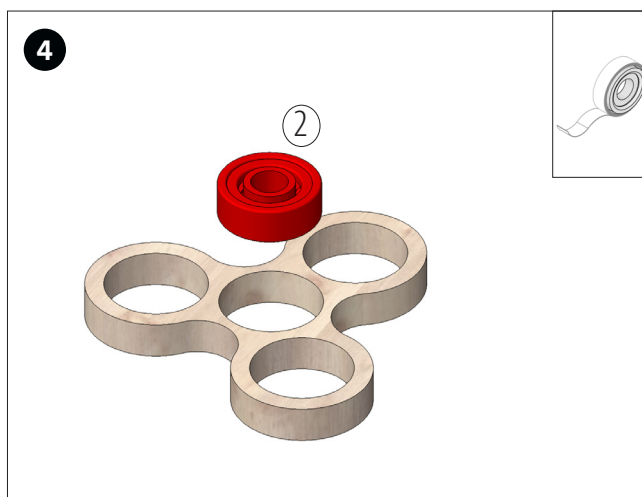
Please Note: For drilling use a plain wooden board as pad



3

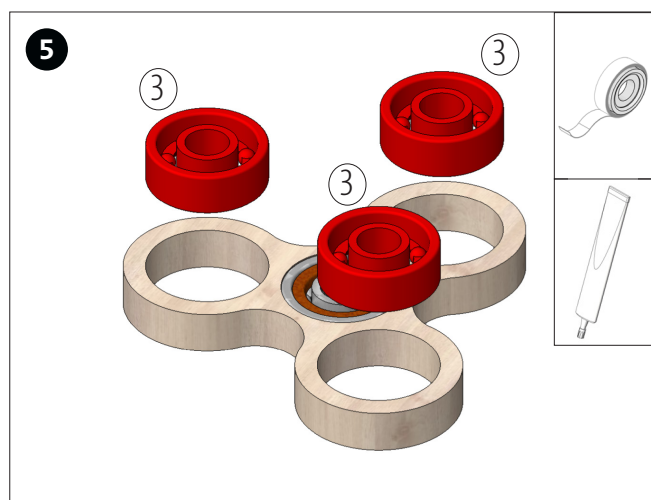
Please Note:
Adjust the speed of the drill to the drill!

Drill and clean the holes ($\varnothing 22$ mm). Customize the spinner as desired. Saw out the spinner, clean saw cuts and decorate with paint according to your own ideas.



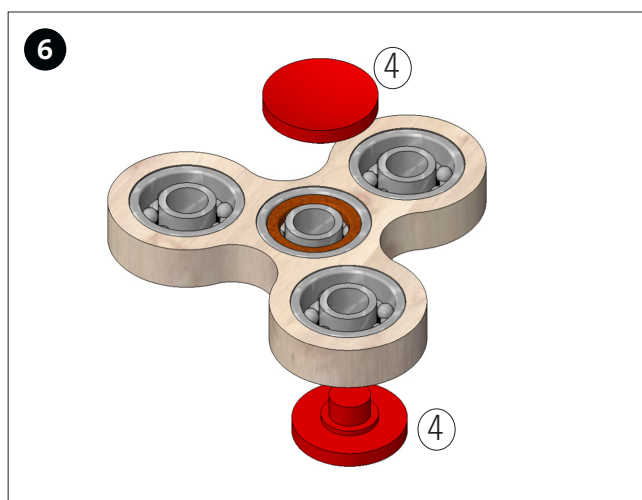
4

Insert the ball bearing (2) into the center hole. If the ball bearing is too loose in the hole, stick some tape around the ball bearing and then insert.



5

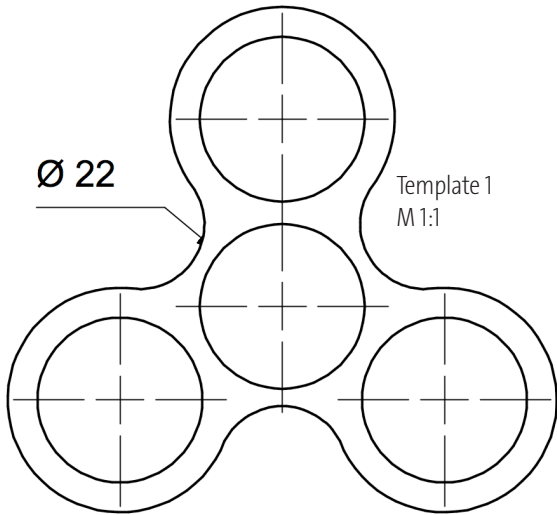
Insert the 3 ball bearings (3) into the provided holes ($\varnothing 22$). If the ball bearings are too loose in the holes, stick some tape around the ball bearings or attach them using some glue.



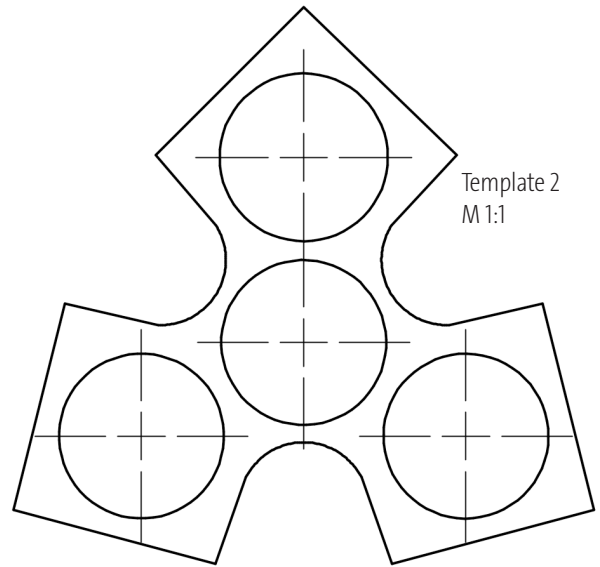
6

Insert the cover caps (4) from both sides into the bore of the center ball bearing (2). Finished!

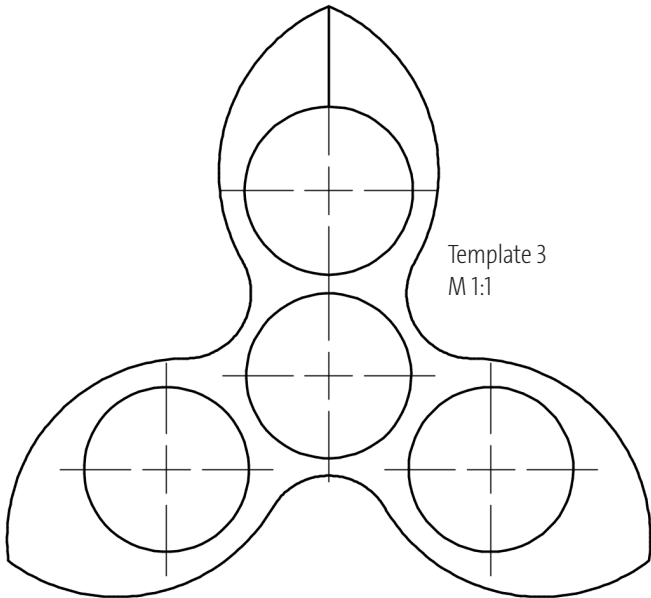
Instruction 118314
OPITEC Spinner Wood with 3 Ball Bearings as Weights



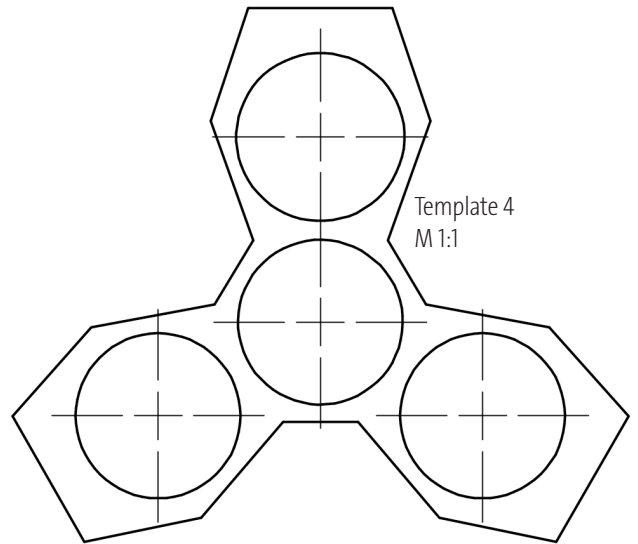
Template 1
M 1:1



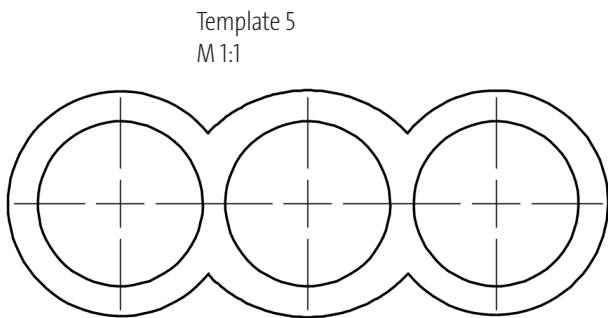
Template 2
M 1:1



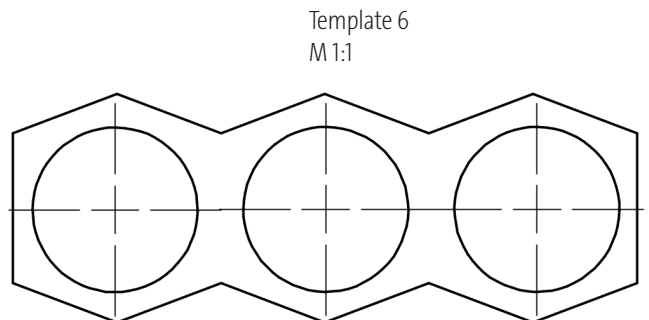
Template 3
M 1:1



Template 4
M 1:1



Template 5
M 1:1



Template 6
M 1:1