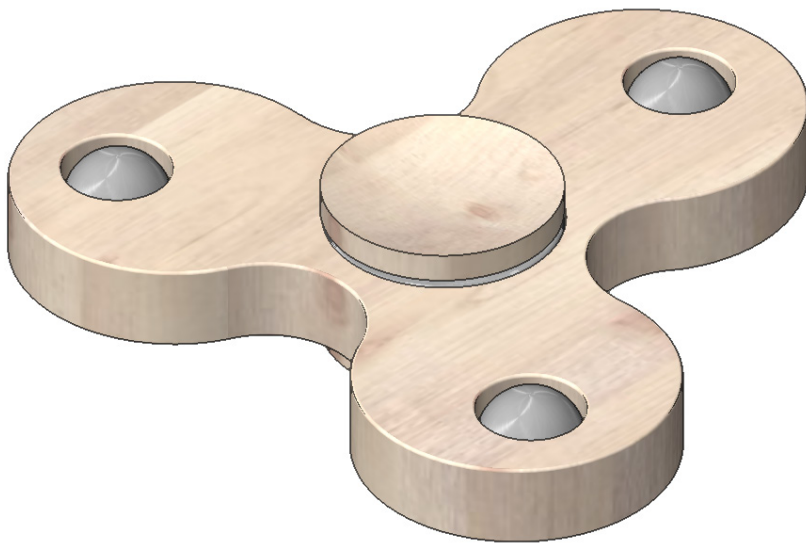
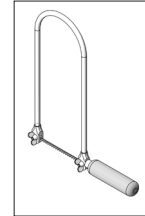


118.314

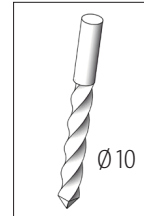
OPTTEC Fidget Spinner



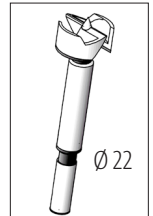
Tools Required:



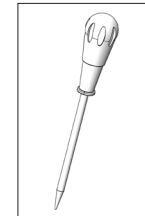
Fretsaw



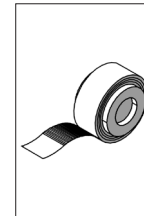
Drill



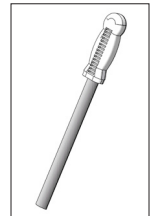
Forstner Drill



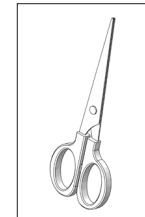
Pricking Awl



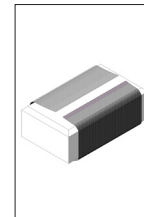
Adhesive Tape



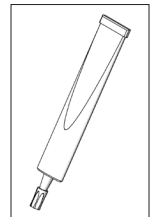
File



Scissors



Sandpaper



All Purpose

Please Note!

The Opitec Range of projects is not intended as play toys for young children. They are teaching aids for young people learning the skills of craft, design and technology. These projects should only be undertaken and operated with the guidance of a fully qualified adult. The finished projects are not suitable to give to children under 3 years old. Some parts can be swallowed. Danger of suffocation!

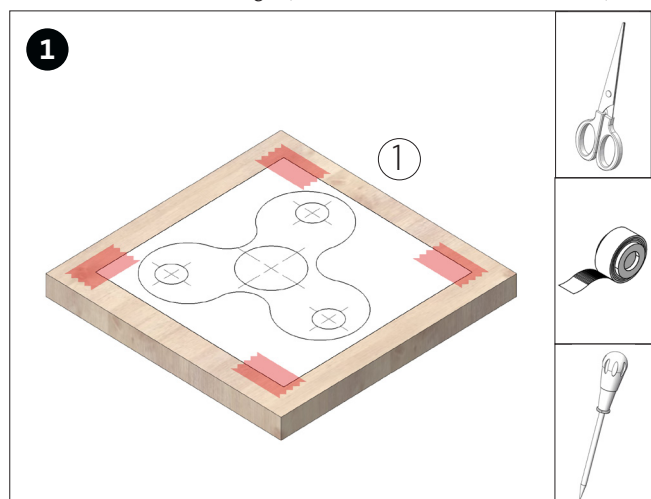
Part List	Quantity	Size (mm):	Description	Part No.
Birch Plywood	1	100 x 100 x 8	Plywood	1
Ball Bearing	1	Ø 22	Ball Bearing	2
Steel Ball	3	Ø 10	Steel Ball	3
Cap	2	Ø 22	Ball Bearing Cover	4

General:

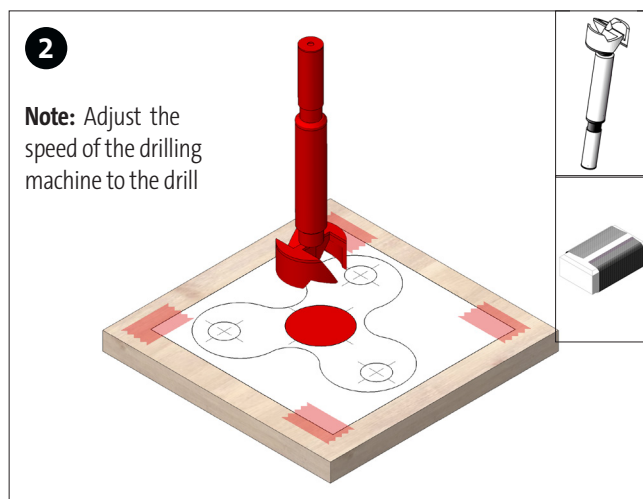
The ball bearing can possibly move not smoothly by preservatives. In this case wash out the bearing with grease-dissolving agent. If compressed air is available, the bearing can also be blown out, taking into account the safety regulations.

Instructions 118314
OPITEC Fidget Spinner

The kit contains 3 steel balls. Template 1-3 can be created with the contents in the kit. For further design options (see template 4-6) additional accessories are available in our range! (Steel ball \varnothing 6mm: Item No. 200754)

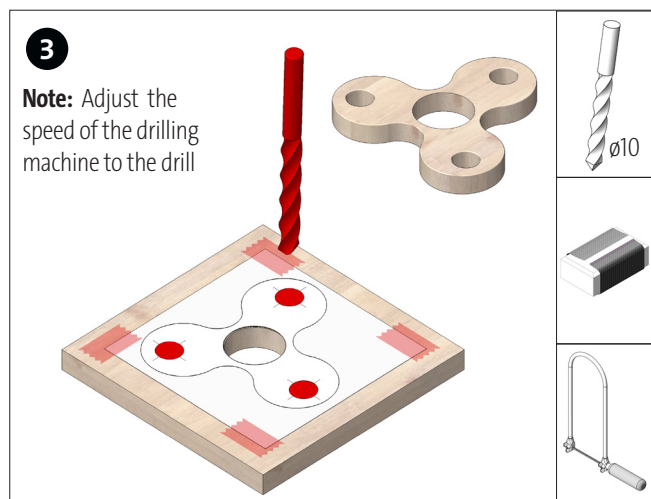


Cut out the desired template (page 3) and glue it with adhesive tape on the plywood plate (1). Mark the holes with the prong.



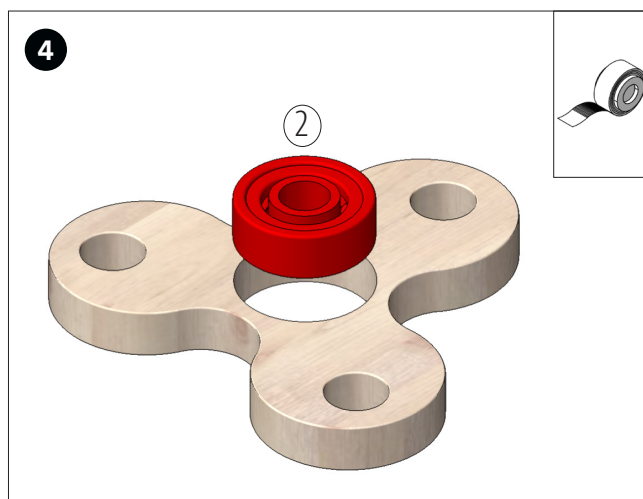
2
Note: Adjust the speed of the drilling machine to the drill

With the Forstner, drill (\varnothing 22) the center bore for the ball bearing (2), clean.
 Note: When drilling, use a flat/straight wooden base!

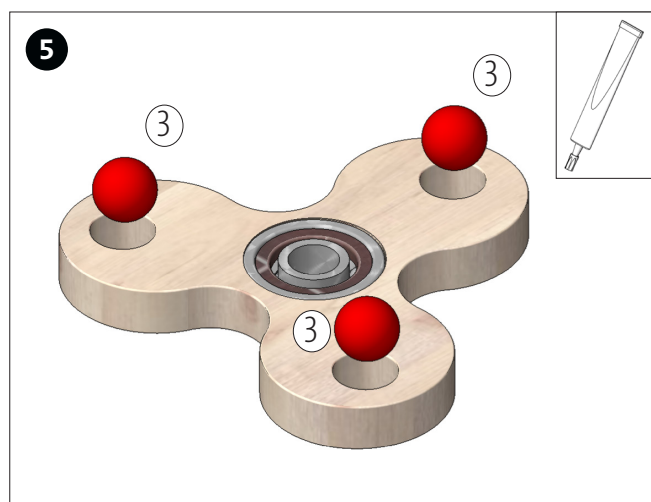


3
Note: Adjust the speed of the drilling machine to the drill

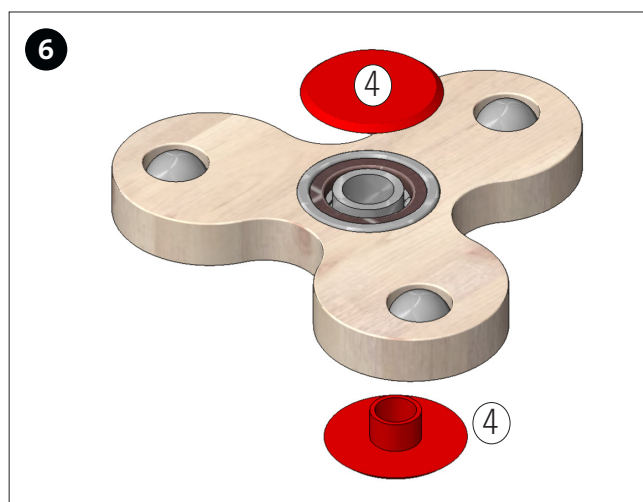
Drill the holes (\varnothing 10 mm) and clean them. Cut the spinner and colour as desired.



Insert the ball bearing (2) into the center hole. If the ball bearing is too loose in the hole, stick some tape around the ball bearing and then insert.



Place the balls (3) as shown in the holes (\varnothing 10), and fix them with glue.



Insert the cover caps (4) from both sides into the bore of the ball bearing. Finished!

Instructions 118314
OPITEC Fidget Spinner

