

Instructions

Zoliduo glass beads - chain



Materials Used	Article Number	Quantity
Zoliduo glass beads-right, 2-hole pearl, about 8 x 5 mm, black, 30 pieces	730417	1
Zoliduo glass beads links, 2-hole bead, approx. 8 x 5 mm, copper coloured, 30 pieces	730406	1
Glass cut beads, approx. Ø 10 x 8 mm, black, 18 pieces	599471	1
Rocailles metallic, approx. Ø 2.6 mm, shiny silver, 17 g	549096	1
Pearl thread, approx. Ø 0.2 mm x 37 m, black, 1 piece	531998	1
Bead tips, platinum coloured, 3 mm, 20 pieces	449592	1
Crimp beads, approx. Ø 2 mm, platinum coloured, 100 pieces	474730	1
Metal magnetic clasps, approx. 10 x 6 mm, 2-part, silver-coloured, 3 pairs	584810	1
Nylon-coated wire, approx. Ø 0.5 mm x 10 m, silver, 1 piece	537282	1
Recommended Materials/Tools:		
Special pliers for crimp beads, approx. 130 mm long, 1 piece	502504	
Chain Maille pliers, 1 curved pliers, 1 flat-nose pliers with pointed tip, set of 2	725144	
Beading needle big eye, approx. 57 mm, 1 piece	716763	

Instructions



1 Arrange beads and pearl thread.



2 Arrange beads for 3 strands of different lengths:

1x strand in the middle consists of 4 black Zoliduo Glass Beads-Right, 5 Copper Zoliduo Glass Beads Links, 30 seed beads silver-coloured, pearl thread approx. 400 mm long.

2x strands consisting of 3 black Zoliduo Glass Beads-Right, 4 Copper Zoliduo Glass Beads Links, 24 seed beads silver-coloured, pearl thread per strand approx. 350 mm

2x strands consisting of 2 black Zoliduo Glass Beads Right, 3 Copper Zoliduo Glass Beads Links, 19 Rocailles silver-coloured, pearl thread per strand about 300 mm



3
The end of the bead thread is threaded copper-coloured through the lower hole of the Zoliduo glass bead. At the other end of the bobbin thread, 7 seed beads are threaded on and further copper-coloured through the top hole of the Zoliduo glass beads.



4
Thread the Zoliduo and the black bead with the pearl thread, then thread 3 seed beads.



5
Continue in the same pattern.



6
Align the finished bead string a little and tighten the bead thread.



7
At the end of each strand, the pearl thread is knotted and fixed with a crimp bead. The protruding bead thread is cut off.



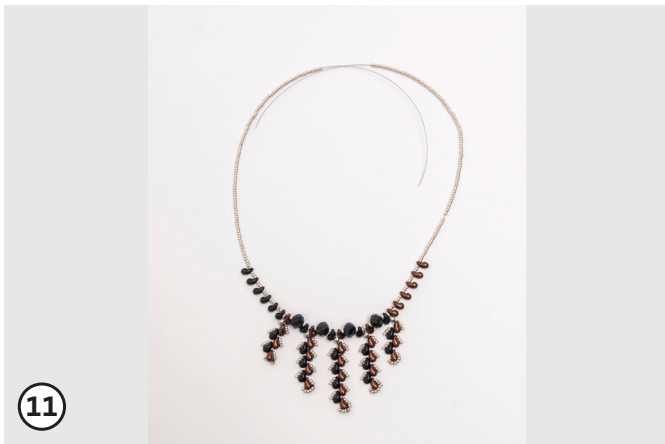
8
At the top, a crimp cap and a crimp bead are threaded. The crimp bead is pushed down to the squeeze cup and fixed. The protruding thread is cut off.



9 The crimp cup is now closed.



10 From the nylon wire (depending on your desired length) Cut off approx. 600 mm long piece. Sequenced: 1 seed beads, 1 Zoliduo glass bead black, shortest strand of pearl, Zoliduo glass bead copper, 1 seed beads, 1 glass bead, 1 seed beads - then repeated in the same order with the pearl strands (see picture) incorporated.



11 One side is threaded with the remaining Zoliduo glass bead copper-coloured and seed beads. At the end, only seed beads. The other side is threaded with the remaining Zoliduo glass beads black and seed beads



12 On each side is a squeeze cup and a Threaded crimp bead. [HYPERLINK "http://194.25.184.152/img/730/417/730417-01s13-x.jpg"](http://194.25.184.152/img/730/417/730417-01s13-x.jpg) \t showx "



13 The crimp bead is pushed down to the crimp cup and fixed. cut off.



14 The eyelets from the closure are hooked into the eyelet of the crimp cup and should now be closed.

Total length: approx. 48 cm.

*Have fun creating and enjoy!
Your Opitec Creative Team!*