

Labelled Soap & Bath Salt

Labelled Soap with Casting Mould - Basic Form



Material Used	Article Number	Quantity
Soap Casting Moulds - Basic Forms, 1 mould with 5 differently designed cavities, approx. 55 - 70 x 20 mm, material required: approx. 350 g casting soap	443529	1
Labels for Moulding - 'Enjoy & Leaf', approx. 25 x 25 mm, set of 2	807750	1
Labels for Moulding - 'Love, Handmade, Time', approx. 30 - 40 x 15 mm, set of 3	807738	1
Labels for Moulding - 'Hearts', approx. 30 x 22 mm, set of 2	807761	1
'Magnetic' Varnish for Labels 100 g	300270	1
Casting Soap 300 g, white	498960	as required
Casting Soap 1000 g, white	498993	as required
Soap Pigment Opaque 10 ml, ocean blue	466118	1
Soap Pigment Opaque 10 ml, olive green	466129	1
Soap Pigment Opaque 10 ml, stone grey	466163	1
Economy Set - Soap Scent Oil, different fragrances, set of 5	436391	1
Wooden Stamp - 'Flower Mandala', approx. ø 28 mm	807820	1
Wooden Stamp - 'Hamsa Hand', approx. ø 26 mm	807808	1
Stamp Pad - Chalk Paint, approx. 45 x 25 mm, anthracite	551774	1
Coloured Cardboard 220 g/sqm, acid free, approx. 50 x 70 cm, 10 sheets, light grey	435144	1
OPITEC Design Punch - Flower, approx. ø 5 cm, applicable for paper up to 220 g/sqm	500063	1
Cotton Cord approx. ø 2,5 mm x 70 m, natural colour	566081	1
Satin - Cord, approx. ø 1 mm x 6 m/twist of thread, silver coloured	559174	alternatively
Satin - Cord, approx. ø 1 mm x 6 m/twist of thread, light blue	567227	alternatively
Satin - Cord, approx. ø 1 mm x 6 m/twist of thread, turquoise	558606	alternatively
Pritt Glue Stick 22 g	301024	1
Recommended Tools		
Melting Pot, 1l capacity	486570	1
Tools Required		
Scissors, kitchen roll, baking paper, tea spoon, pickle jar and cooking pot for hot water bath (or melting pot), ruler, pen, cutter or scalpel, embroidery needle or punch		

Basic Instruction for Soap Casting

To cast soap layers of different colours, for every soap layer you have to melt and dye soap separately. To achieve different shades of colour soap pigments can be mixed among each other.

You can add soap fragrance simultaneously with the pigment.

To avoid mixing of the individual soap layers, take care to pour liquid soap only on layers that have cooled down sufficiently.

To be sure you can observe a "skin" forming on the cooled layer similar to the one on self made pudding. Then you cautiously can pour another soap layer.

Pour the individual coloured layers into the desired casting mould.

Then allow the soaps to air dry.

Remove the soaps from the mould. If they don't come out easily put them into the freezer for approx. 10 minutes and then pour warm water on the back side of the casting mould. Then the soaps will slide easily off the mould.

Instruction



Place the labels into the soap casting moulds with the front side facing down. You can fix them additionally with adhesive varnish on the lower side.



Pour soap into the moulds as described in the basic instruction. Remove cooled off soaps from the moulds and take out the soap labels.



Cut out banderole and punch flower from grey cardboard.
 Stamp both with the desired wood stamp designs.
 Wrap banderole around the soap and fix with some glue.
 Additionally put a piece of cord around the soap and make a knot.
 With the embroidery needle (or a punch) make a hole into the cardboard flower. Cut a piece of cord, lead it through the flower and fix it to the soap.

Labelled Soaps with Casting Mould - Form of 9 moulds



Material Used	Article Number	Quantity
Soap Casting Mould - for 9 soap pieces, approx. 24,5 x 18,5 x 3,5 cm, each soap 7,5 x 5,5 x 3,5 cm, 1 mould with 9 cavities,	481411	1
material needed: approx. 1300 g casting soap	807750	1
Labels for Moulding - 'Enjoy & Leaf', approx. 25 x 25 mm, set of 2	807738	1
Labels for Moulding - 'Love, Handmade, Time', approx. 30 - 40 x 15 mm, set of 3	807761	1
Labels for Moulding - 'Hearts', approx. 30 x 22 mm, set of 2	807772	1
Labels for Moulding - 'Buddha & Happiness', approx. ø 30 mm, set of 2	807783	1
Labels for Moulding - 'Happiness & Good Mood', approx. 35 x 25 mm, set of 2	807749	1
Labels for Moulding - 'Relax', approx. ø 45 mm, 1 piece	300270	1
'Magnetic' Varnish for Labels 100 g	498960	as required
Casting Soap 300 g, white	498993	as required
Casting Soap 1000 g, white	466118	1
Soap Pigment Opaque 10 ml, ocean blue	466129	1
Soap Pigment Opaque 10 ml, olive green	466163	1
Soap Pigment Opaque 10 ml, stone grey	436391	1
Economy Set - Soap Scent Oil, different fragrances, set of 5	807820	1
Wooden Stamp - 'Flower Mandala', approx. ø 28 mm	807819	1
Wooden Stamp - 'It's my time', approx. 30 x 40 mm	807864	1
Wooden Stamp - 'Bath Time', approx. 55 x 35 mm	807831	1
Wooden Stamp - 'Time for yourself', approx. 45 x 35 mm	807853	1
Wooden Stamp - 'Happiness is homemade', approx. 45 x 45 mm	807842	1
Wooden Stamp - 'Short Vacation', approx. 25 x 65 mm	807875	1
Wooden Stamp - 'Keep Calm', approx. 25 x 65 mm	807808	1
Wooden Stamp - 'Hamsa Hand', approx. ø 26 mm	551774	1
Stamp Pad - Chalk Paint, approx. 45 x 25 mm, anthracite	435144	1
Coloured Cardboard 220 g/sqm, acid free, approx. 50 x 70 cm, 10 sheets, light grey	612209	1
Motif Paper – Jungle, 100 g/sqm, each design twice, printed on one side, 305 x 305 mm, 40 sheets	500063	1
OPITEC Design Punch - Flower, approx. ø 5 cm, applicable for paper up to 220 g/sqm	535737	1
OPITEC Design Punch - Circle, approx. ø 25 mm, applicable for paper up to 220 g/sqm	550583	1
OPITEC Design Punch - Circle, approx. ø 50 mm, applicable for paper up to 220 g/sqm	566081	1
Cotton Cord approx. ø 2,5 mm x 70 m, natural colour	559174	alternatively
Satin - Cord, approx. ø 1 mm x 6 m/twist of thread, silver coloured	567227	alternatively
Satin - Cord, approx. ø 1 mm x 6 m/twist of thread, light blue	558606	alternatively
Satin - Cord, approx. ø 1 mm x 6 m/twist of thread, turquoise	301024	1
Pritt Glue Stick 22 g		
Recommended Tools		
Melting Pot, 1l capacity	486570	1
Tools Required		
Scissors, kitchen roll, baking paper, tea spoon, pickle jar and cooking pot for hot water bath (or melting pot), sharp knife, ruler, pen, cutter or scalpel, embroidery needle or punch		

Basic Instruction for Soap Casting

To cast soap layers of different colours, for every soap layer you have to melt and dye soap separately. To achieve different shades of colour soap pigments can be mixed among each other.

You can add soap fragrance simultaneously with the pigment.

To avoid mixing of the individual soap layers, take care to pour liquid soap only on layers that have cooled down sufficiently.

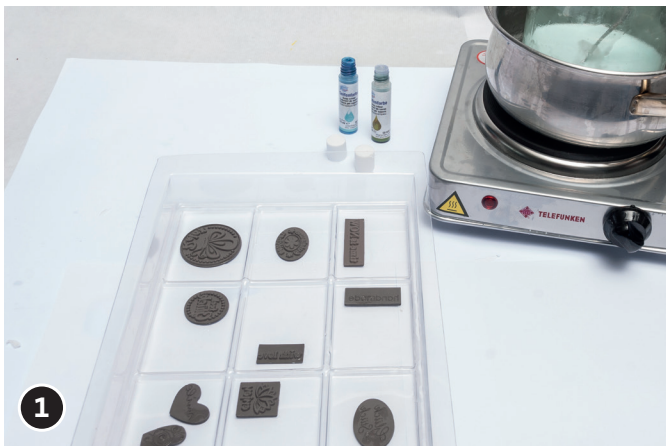
To be sure you can observe a "skin" forming on the cooled layer similar to the one on self made pudding. Then you cautiously can pour another soap layer.

Pour the individual coloured layers into the desired casting mould.

Then allow the soaps to air dry.

Remove the soaps from the mould. If they don't come out easily put them into the freezer for approx. 10 minutes and then pour warm water on the back side of the casting mould. Then the soaps will slide off the mould easily.

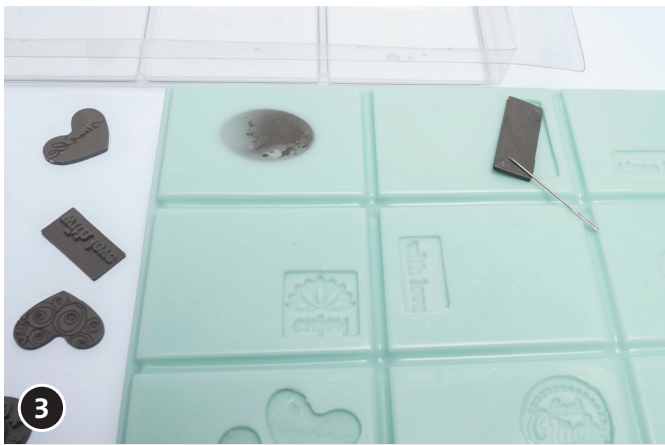
Instruction



Place labels into the casting moulds with the front side facing down. You can fix them with adhesive varnish on the lower side.



Pour soap into the moulds as described in the basic instruction.



3
Remove cooled off soaps from the moulds and take out the soap labels.
Cut the soaps into pieces with a sharp knife along the grid lines.



4
Cut out banderoles from grey cardboard, punch flowers and circles. Cut out rectangular labels with a cutter (or scalpel).

Stamp banderoles and labels with desired stamp designs. Cut or punch suitable labels from jungle design paper.

Wrap banderoles around the soaps and fix with some glue. With the embroidery needle (or a punch) make a hole into the cardboard labels.

Attach labels with a piece of cord lead through the hole.

For decoration you can wrap more cord pieces around the soaps.

Decorative Bath Salts with Label



Material Used	Article Number	Quantity
French Bath Salt, 700 g	478368	1
Soap Pigment Opaque 10 ml, olive green	466129	1
Soap Pigment Opaque 10 ml, ocean blue	466118	1
Soap Pigment Opaque 10 ml, chocolate brown	466141	1
Soap Pigment Opaque 10 ml, stone grey	466163	1
Soap Pigment Opaque 10 ml, ivory	466152	1
Economy Set - Soap Scent Oil, different fragrances, set of 5	436391	1
Test Tubes, approx. ø 20 x 200 mm, set of 3	451308	1
Corks for Test Tubes, approx. ø 17(20) x 24 mm, set of 5	606505	1
Wooden Stamp - 'Bath Salt', approx. ø 28 mm	807794	1
Wooden Stamp - 'Short Vacation', approx. 25 x 65 mm	807842	1
Wooden Stamp - 'Keep Calm', approx. 25 x 65 mm	807875	1
Coloured Cardboard 220 g/sqm, acid free, approx. 50 x 70 cm, 10 sheets, light grey	435144	1
Motif Paper – Jungle, 100 g/sqm, each design twice, printed on one side, 305 x 305 mm, 40 sheets	612209	1
OPITEC Design Punch - Circle, approx. ø 50 mm, applicable for paper up to 220 g/sqm	550583	1
Cotton Cord approx. ø 2,5 mm x 70 m, natural colour	566081	1
Satin - Cord, approx. ø 1 mm x 6 m/twist of thread, silver coloured	559174	alternatively
Satin - Cord, approx. ø 1 mm x 6 m/twist of thread, light blue	567227	alternatively
Satin - Cord, approx. ø 1 mm x 6 m/twist of thread, turquoise	558606	alternatively
Tools Required		
Scissors, soup spoon, plastic bag, cutter or scalpel, embroidery needle or punch		

Basic Instruction Bath Salt

1. To dye in different colours, divide bath salt into portions.
2. Fill each portion into a plastic bag.
3. Add a small amount (3 - 5 %) of the desired pigment and/or fragrance each.
4. Close bag carefully.
5. Shake the bag vigorously for the additives to distribute evenly.
6. Fill bath salt in layers of alternating colours into a decorative glass jar.

Instruction



With a cutter (or punch) cut label from grey cardboard and punch circles.

Stamp labels with desired stamp designs.

Cut or punch suitable labels from jungle design paper.

With the embroidery needle (or a punch) make a hole into the cardboard labels.

Attach labels to the test tubes with a piece of cord lead through the hole.

*Have fun creating and enjoy!
Your Opitec Creative Team!*