

Instructions Felt Angel



Materials Used

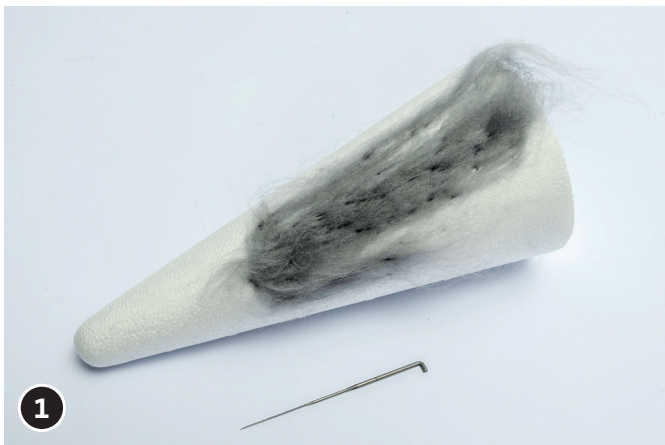
Article Number

Quantity

Polystyrene Cone, 12 cm, size as desired	547134	
Polystyrene Cone, 20 cm	547145	1
Polystyrene Cone, 26 cm	507456	
Polystyrene Ball, 3 cm, size as desired	510299	
Polystyrene Ball, 4 cm	547075	
Polystyrene Ball, 5 cm	547086	1
Polystyrene Ball, 6 cm	510303	
Fleece Wool - Combed, 50g, grey	528711	1
Fleece Wool - Combed, 50g, natural white	528685	1
Felt Teasing Needle, set of 3	522849	1
Modelling Felt, grey, 495 x 370cm x 3mm, 3 pieces	417278	1
Cardboard or		1
Corrugated Card, 10 sheets, natural, 50 x 70cm	420158	

Recommended Materials/Tools

pin, skewer, scissors



1
Deduct strings of the grey fleece wool and apply them to the styrofoam cone. Penetrate the cone again and again with a felt needle until the wool fibers are completely connected with the styrofoam. Repeat this procedure until there is no visible styrofoam.



2
Deduct strings of the fleece wool (natural white), apply them wafer-thin in the lower part of the cone.



3
Fold a piece of paper in the middle and sketch a wing. Cut the wing and unfold the paper. Transfer the wing to the modelling felt and cut it again. Fix the wing with 2 pins on the cone.



4
Break a piece of the skewer, put it into the styrofoam ball and place it on the tip of the cone. Apply white fleece wool on the head and connect it with the styrofoam.



5
Paint two circles as rings on cardboard or corrugated card, cut them and fix them with a pin to the head.

Cut or die-cut (stamping machine: 609514/ 609503) a star out of cardboard or corrugated card. Glue it to the cone, use double faced adhesive tape.

*Have fun creating!
Your Opitec Creative Team!*