

Creating Moulds with Formaform



Used Material

Formaform set:
Content: 800 g Formaform granules, 325 g Formaform-Liquid, 125 g Formaform-Thermolan

Article No.

417717

Qty

1

Material needed: approx. 3800 g creative concrete

Soap melting pot, aluminium,
volume: 1 l

486570

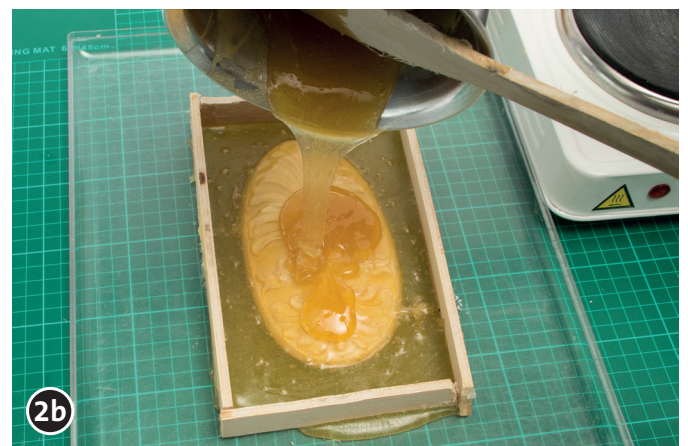
1

Tools needed

Protective cover, heat-resistant bowl (or frame), melting pot (or pot or large jar), whisk, bristle brush, scissors



Formaform is a moulding mixture with great application possibilities. Formaform consists of small, rubbery pellets which are heated and melted in a pot with water, just like wax. This produces a thick liquid mixture, which should be mixed with the included Formaform-Liquid at a ratio of 100 : 40.



The hot and liquid Formaform is then poured onto the prepared model, which produces the desired shape. (The first layer can also be applied with a brush.) Ca. 20 - 30 minutes later, the material has become a rubbery solid form, which could be used immediately for casting.



Unfortunately, it is not heat-resistant and resistant to materials containing water. Therefore, the mould can be melted again any time, which offers unique advantages over other similar moulding mixtures. An unsuccessful or imperfect mould can be melted again.

Once the mould is perfect, the included Formaform Thermolan is used to make the mould heat and water-resistant. Brush the inside of the actual mould surface with Formaform Thermolan. Afterwards the mould can be used like any other mould, but can no longer be melted down.

*Have fun creating,
Your OPITEC Creative Team*