

# Modelled Jewellery



## Designed models with Sculpey® template and colour set (pendant and large, curved ring)

Used Material	Article No.	Qty
Sculpey® template and colour set, 7pieces	442936	1
FIMO® soft 57g, black	495788	2
Sculpey® hollow beads shaper, approx. ø 20 - 45 mm buckle	442590	1
Rhinestones mix, approx. ø 7 mm, colourful, set of 9	437641	1
Collier Silky Cord, 450 x 3 mm, champagne	575691	1
Metal ring approx. ø 17 mm, plate: approx. ø 10 mm, silver, 6 pcs	575495	1
Spacer rings, approx. ø 12 mm, gold coloured, 20 pcs	206602	1

### Recommended Tools/Materials

Staedtler kneading machine for modelling, approx. 270 x 265 x 167 mm	438197	1
Modelling roller, approx. ø 25 x 200 mm	807196	1
Cutter set ring, approx. ø 29-112 mm, 14 pcs	541375	1
Pearl Picker duo, approx. 160 mm long	417290	1
Jewellery adhesive 31ml, transparent	567663	1

### Needed Tools

Pad, kitchen roll, sharp knife, scissors, cutters round, tweezers (or pearl picker), wooden sticks, round nose pliers



1  
Knead the black modelling clay lukewarm. Roll an approx. 3-mm thick plate with the kneading machine or the modelling roller. Cut out the desired circles with the ring-cutters (based on size of hollow beads shaper). Put the circles that are not coloured, in the hollow beads shaper. Drill a hole for pendant.



2  
Place cut out, modelled circles ready for the transfer of the colour. Place the template, apply some paint and distribute it thin with the scraper on the motive template. Then remove the template. Let the colour dry for about 5 minutes. Insert the printed discs in the hollow beads shaper. Drill a hole for the pendant and for the gemstone as well. Put the modelling at 110 ° C, 30 minutes in the oven. Remove from the oven, allow to cool and remove from the hollow beads shaper. For the pendant, take both forms together in one spacer ring. Put the collier silky cord in the spacer ring as well. Fasten the plate of the ring with the jewellery adhesive on the bottom of the form. Fix the rhinestone in the dedicated drilled hole.

## Rings and pendants designed with Sculpey® clay decals



### Used Material

	Article No.	Qty
Sculpey® clay decals, 6 designs, 50 x 50 mm, 7 pcs	607774	1
FIMO® soft 57g, black	495788	1
Metal ring oval, approx. 20 x 25 mm, silver	486433	1
Metal ring round, approx. ø 24 mm, silver	474319	1
Metal pendant oval, approx. 22 x 30 mm, 2 pcs Silver	470773	1
Metal pendant round, approx. ø 38 mm, silver	474294	alternatively
Stainless steel necklace, approx. 450 mm long, silver	581801	1
Chain approx. 1 m x 3 mm, silver	548023	1
Spacer rings approx. ø 6 mm, 20 pcs, silver	583803	1
Rhinestones mix, approx. Ø 2 mm, set of 50	426501	1

### Recommended Tools/Material

Staedtler kneading machine for modelling, approx. 270 x 265 x 167 mm	438197	1
Modelling roller, approx. ø 25 mm x 200 mm	807196	1
Pearl Picker duo, approx. 160 mm long	417290	1
Jewellery adhesive 31ml, transparent	567663	1

### Needed Tools

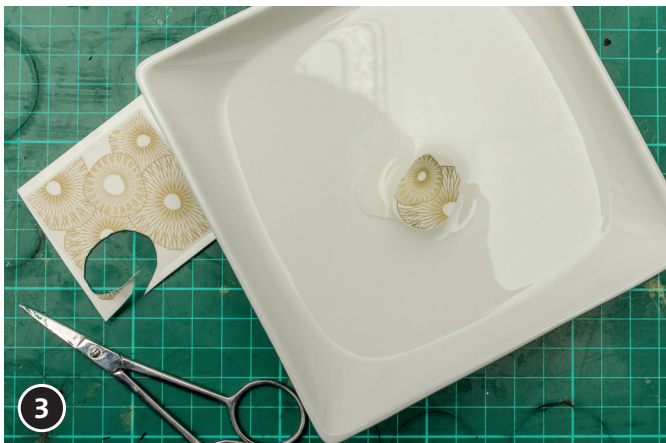
Pad, kitchen roll, sharp knife, scissors, tweezers (or pearl picker), wooden sticks, round nose pliers, side cutter



Put the ring on the decal, mark and cut the motive.



Knead the black modelling clay lukewarm. Roll a plate with the kneading machine or the modelling roller (thickness of the plate based on the cavity of the ring). Put the ring opening on the plate and use a sharp knife to cut the form. Now put the cut piece into the ring opening.



Dip the cut decal (including paper) for about 30 seconds in water.



Slide the decal from the paper to the modelling compound. Take a kitchen roll to remove the excess water. Smooth the decal carefully with the squeegee to ensure that no air bubbles emerge.

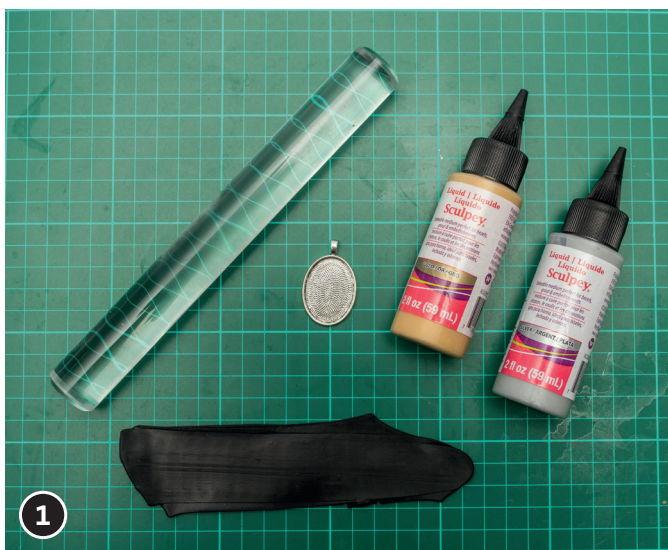


Put the modelling (with decal) about 110 ° C, 30 minutes in the oven.  
 Pendant: Put the stainless steel necklace or chain through the eye of the pendant. Fix the collier clasp with jewellery glue. Connect the beginning and end of the chain with a spacer ring.

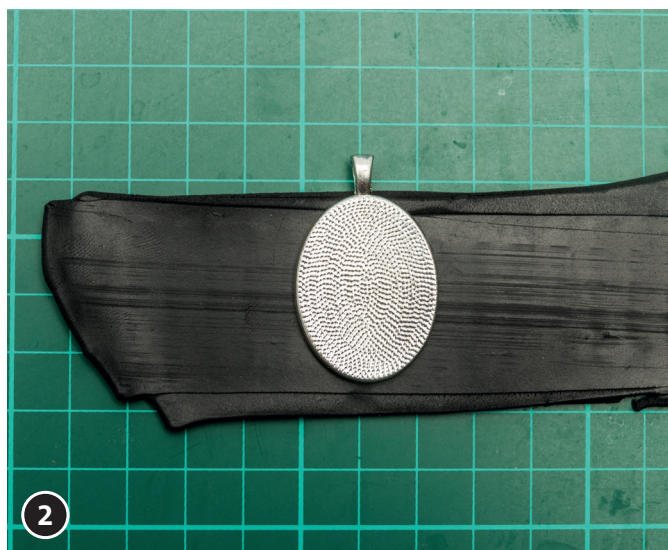
# Pendants designed with Sculpey® Liquid

Used Material	Article No.	Qty
Sculpey® Liquid 59 ml, gold	608297	alternatively
Sculpey® Liquid 59 ml, silver	608301	1
FIMO® soft 57g, black	495788	1
Metal pendant oval, approx. 22 x 30 mm, 2 pcs Silver	470773	1
Metal pendant round, approx. ø 38 mm, silver	474294	alternatively
Stainless steel necklace, approx. 450 mm long, silver	581801	alternatively
Chain approx. 1 m x 3 mm, silver	548023	1
Spacer rings approx. ø 6 mm, 20 pcs, silver	583803	1
Rhinestones mix, approx. ø 4 mm, colorful, set of 40	436922	1
<b>Recommended Tools/ Material</b>		
Staedtler kneading machine for modelling, approx. 270 x 265 x 167 mm	438197	1
Modelling roller, approx. ø 25 mm x 200 mm	807196	1
Pearl Picker duo, approx. 160 mm long	417290	1
Jewellery adhesive 31ml, transparent	567663	1

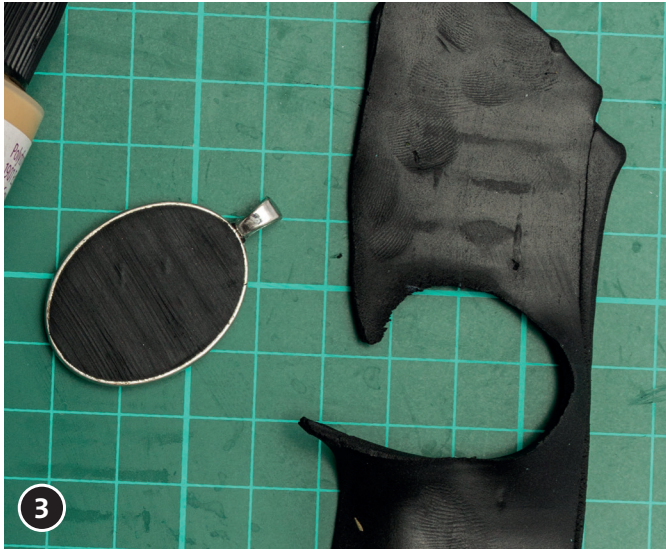
**Needed Tools**  
 Pad, kitchen roll, sharp knife, scissors, tweezers (or pearl picker), wooden sticks, round nose pliers, side cutter



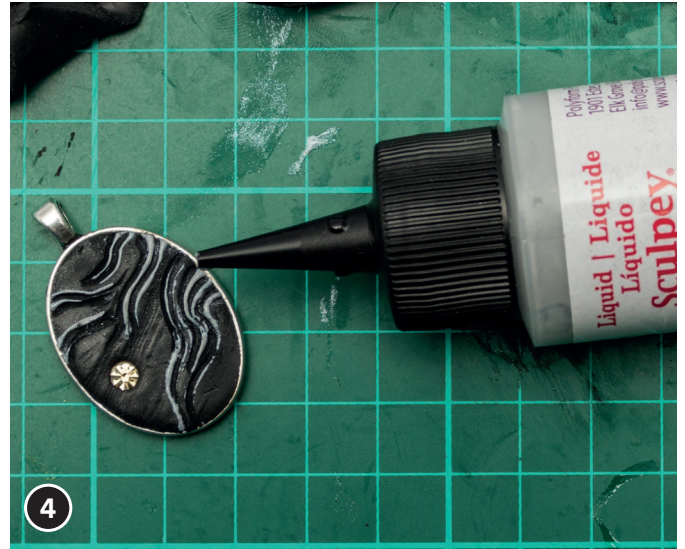
1 Knead the black modelling clay lukewarm. Roll a plate with the kneading machine or the modelling roller (thickness of the plate based on the cavity of the pendant).



2 Put the pendant opening on the front on the plate and use a sharp knife to cut the form.



Now put the cut piece into the pendant opening.



Press some rhinestones into the modelling and colour your pendant with the Sculpey® Liquid. Put it at about 110 ° C 30 minutes in the oven. Put the stainless steel necklace or chain through the eye of the pendant. Fix the collier clasp with jewellery glue. Connect the beginning and end of the chain with a spacer ring.

*Have Fun  
Your Opitec Creative Team*