

Instruction

Deco pendant for your bag

R021

Deco pendant for your bag



Required items	Article no.	Quantity
Wooden button, Ø30mm, 10pcs	109298	2
Wood – Button, Ø40mm, 10 pcs	109302	1
Wood – Button, Ø50mm, 10 pcs	109313	1
FIMO soft Modelling clay 57g, white	495700	2
FIMO soft Modelling clay 57g, sahara	427149	2
FIMO soft Modelling clay 57g, tropical green	486101	2
FIMO soft Modelling clay 57g, brilliant blue	495962	2
FIMO soft Modelling clay 57g, chocolate	495364	2
FIMO soft Modelling clay 57g, black	495788	2
Texture mat approx. 90x90mm, Phantasy	584050	1
Texture mat approx. 90x90mm, Moments	572202	option
Texture mat approx. 90x90mm, Village	572224	option
Texture mat approx. 90x90mm, Spirals	584072	option
Imitations Leather cord Ø1mm, 5m, light blue	305362	1
Spring hook approx. 35x14mm, platinum	584809	2
Ponal Fix&Fest wood glue	300018	1

Recommended materials/tools	Article no.	Quantity
STAEDTLER Fimo clay machine	438197	1
Acrylic roller approx. 25mm x 200mm	807196	1
FIMO professional clay extruder, 21 pcs	453180	1
FIMO cutter set, 110-150x20mm, 4 pcs	527333	1
FIMO soft Magic roller	512967	1
Multipurpose stand 100x100x60mm, 7parts	493029	1
Cutters – Rings 29-112mm, 14pcs	541375	1
Sculpey Bead making kit	442659	option

Required tools

Protective mat, wood glue, kneading machine, modelling roller, clay press, drill with Ø3mm wood drill, sharp knife or FIMO cutter, ruler, wooden skewer, bead shaper.

Buttons



Take the buttons of various sizes. Using wood glue, glue them together.
 Pendant on the right: wooden button 2 x Ø50mm, 2 x Ø40mm
 Pendant on the left: wooden button 4 x Ø30mm.
 Leave the buttons to dry. Then drill the holes in them.

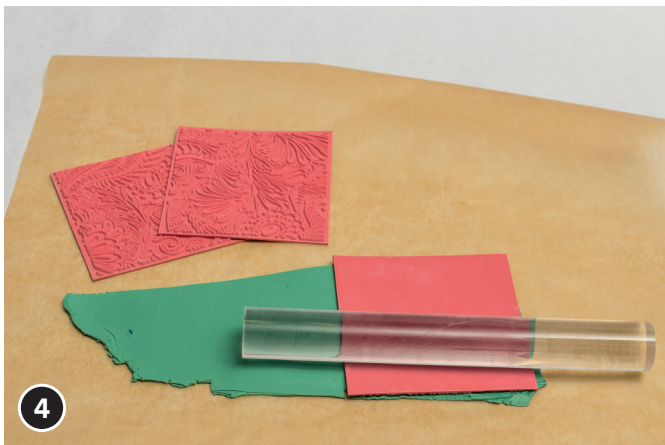


Prepare one small piece of FIMO modelling clay.(not black).



The colors: chocolate and sahara are used in the original. Put some sahara clay in the clay press. Make a long 'cord' and put it between the edges of the glued buttons. This creates a uniform rounded outer edge of the button.

Mix now about 2/3 of tropical green and 1/3 of brilliant blue and vice versa. White can be added to lighten the colour.
 Mixing is easy with kneading machine. Repeat the action until they are mixed properly. Now roll 3mm plates using each colour.



4 Put the texture mat on the rolled plate and press it.



5 The texture appears on the clay.



6 Using the ring-cutters cut circles (size of buttons!) from the embossed plates. Put the embossed circles on the wooden buttons. Decorate the buttons with different colored, embossed modeling clay. Attention! Holes of buttons must be cleaned with wooden stick! Now harden the buttons in the oven at 110 ° C for approx. 30 minutes. After baking, leave the buttons to cool.

Beads



Roll the modelling clay (choose your favourite colours), plate should be about 2mm thick. Cut small circles from the plates.



Put various coloured circles on one another. Put the pile into clay press.



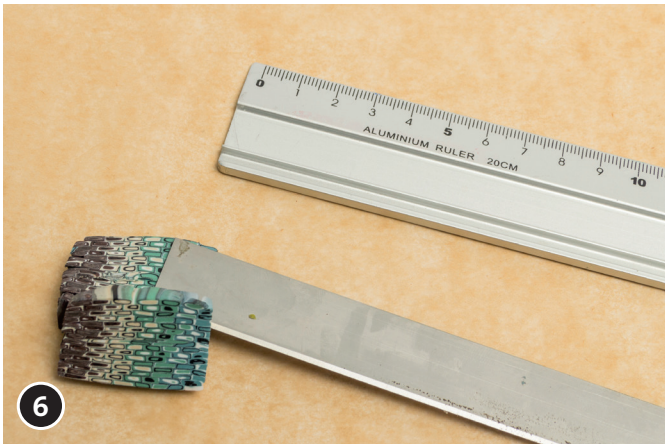
You get long colourful 'cord' of clay. Cut it into 20 cm parts. Put them on the table one next to another until they form the belt approx. 5cm wide.



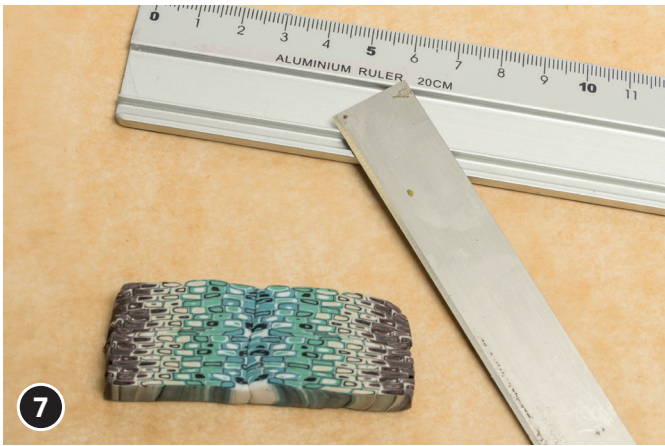
Roll them flat, cut in half and put one half on another.



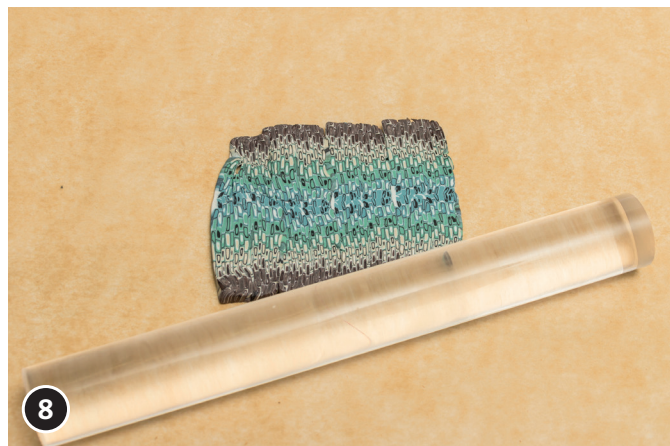
Repeat the action until you get about 2cm thick block.



Divide this block into several parts.



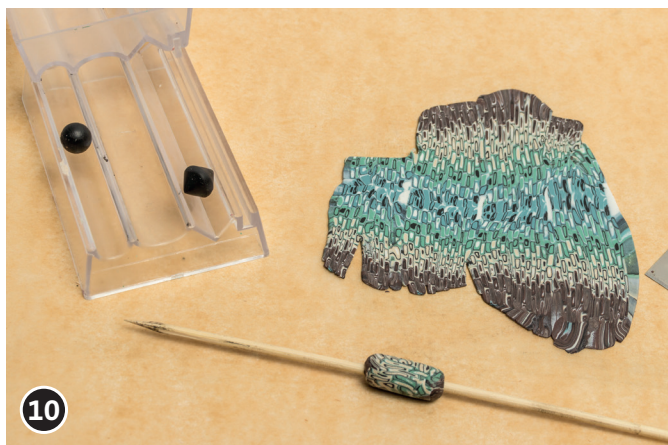
Put the parts next to one another.



Roll them to have one plate.



Take the black modelling clay. Using bead shaper make the beads.



Cover the black beads with your design plate. Remove the excess of material. Make the holes in your beads using wooden stick. Remove the skewer and thread the beads on the metal rod of the multiple stand. Work all the desired beads and drag them onto the rods. Now the beads must be hardened on the multiple stand in the oven at 110 ° C for 30 minutes. Leave the beads after baking t cool.

Joining the parts together



Use the leather cord to hang buttons and beads. You can put the cord through the drilled holes. Make knots between elements. In the end fix the spring hook and enjoy your decorative pendants.

OPITEC Creative team wishes you lots of fun!