

Instruction

Mosaic doormat

R021

Mosaic doormat



Required items

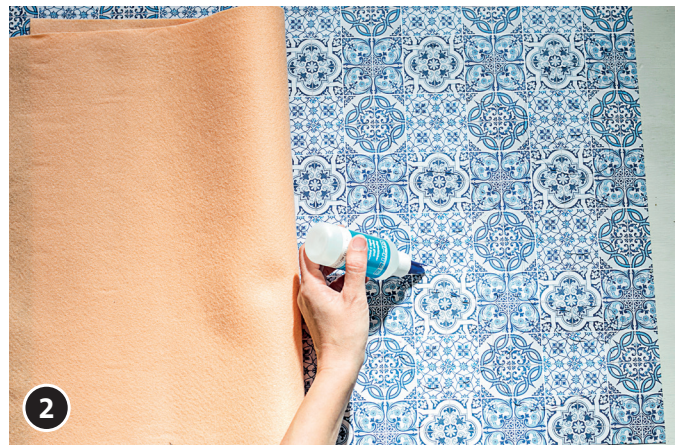
	Article no.	Quantity
Modelling felt	515921	1
Mosaic glue, 125ml	558477	1
Mosaic Softglas – Square, transparent, approx. 20x20mm	506724	7
Motif Photo cardboard Tile	443208	1
Mosaic Grout 1000 g	504906	1
Jewellery glue, 31ml	567663	1

Recommended materials/tools

Hobby modelling knife, 9mm	360711	
----------------------------	--------	--



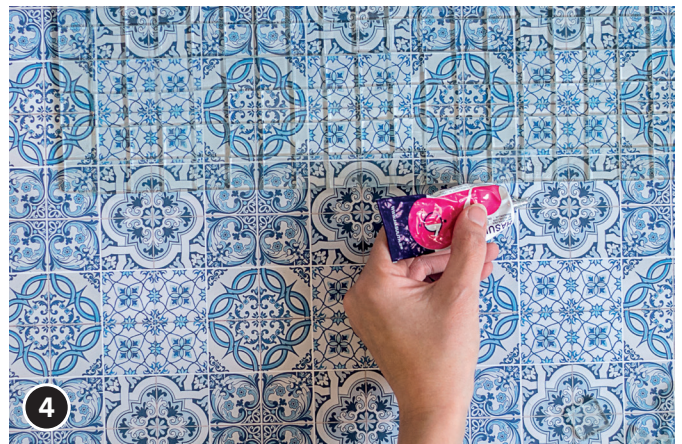
At first, cut the felt to the required size.



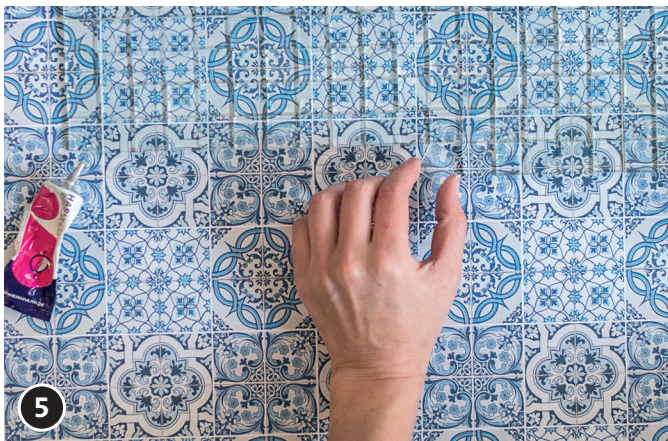
Spread the mosaic glue over the paper and put the felt on it.



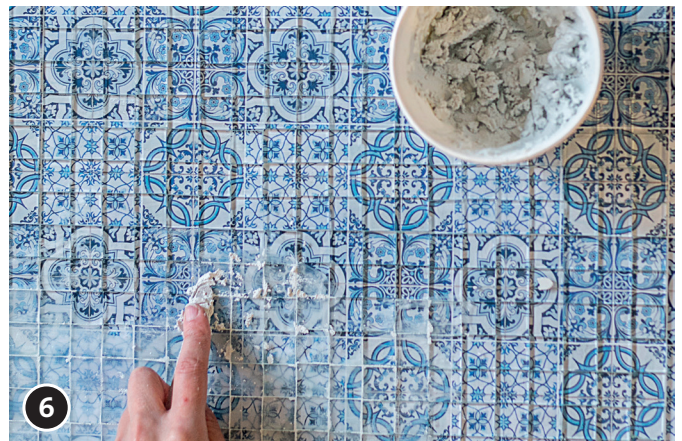
Press the felt.



When it is completely dry, spread the jewellery glue carefully over the paper.



Now put the mosaic stones, piece by piece carefully on the surface. Leave the doormat to dry.



When the mosaic is dry, spread the grout.



Clean the surface with a cloth and leave it to dry.



Remove the protruding felt or paper.

Now your mosaic doormat is finished!

OPITEC Creative team wishes you lots of fun!